



# SQL in Azure

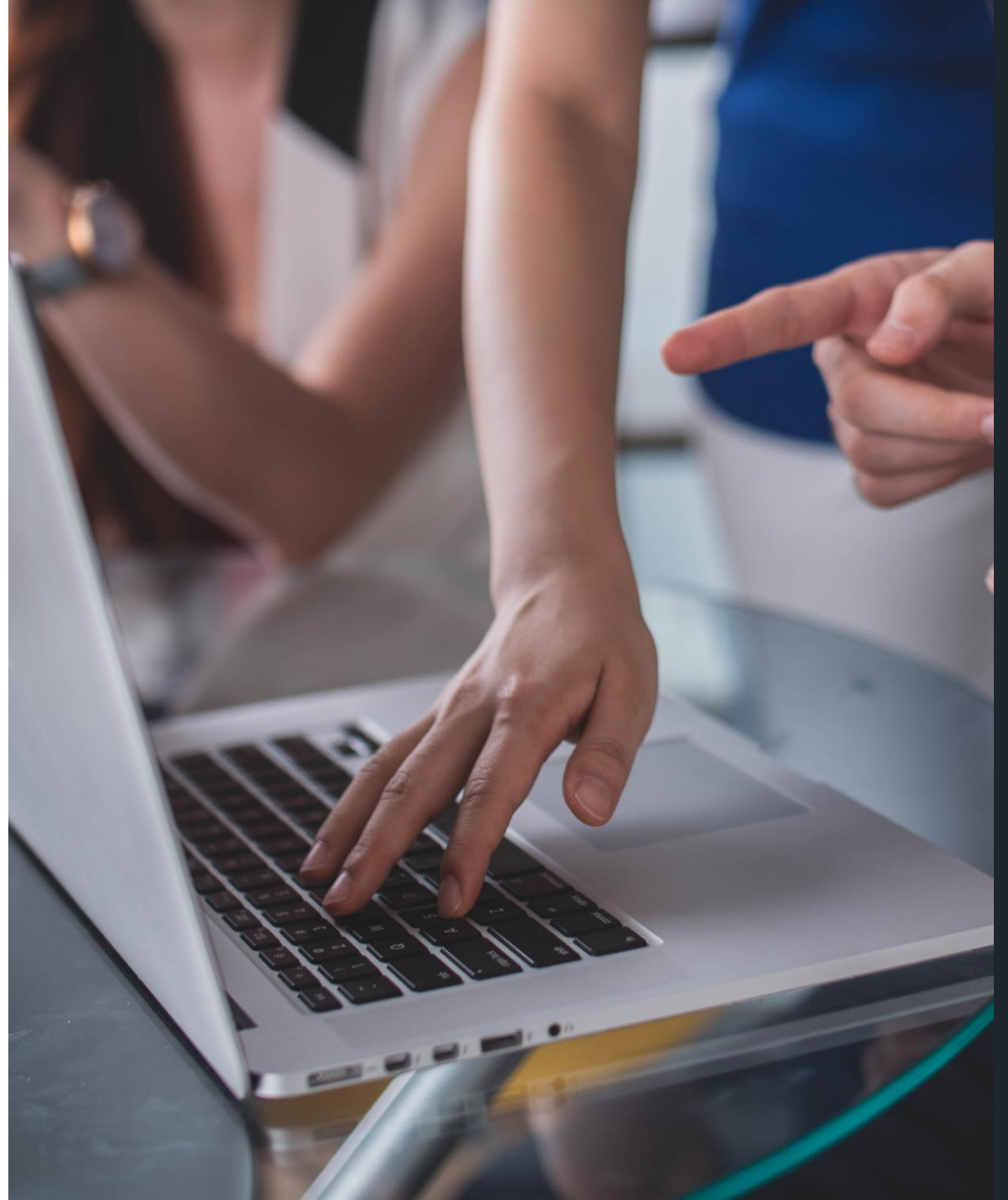
Webinar 3:  
SQL Server Migration

TJ Turner – Microsoft Cloud Sales Engineer

# Pre-Demo

## Setup and Template Deployment

- [Before the Demo setup guide](#)
- [Migrating SQL databases to Azure Demo](#)



# Overview

## Setting the stage

Tailspin Toys, a subsidiary of Wide World Importers (WWI), is the developer of several popular online video games. Founded in 2010, the company has experienced exponential growth since releasing the first installment of their most popular game franchise to include online multiplayer gameplay. They have since built upon this success by adding online capabilities to the majority of their game portfolio.

Adding online gameplay has dramatically increased the popularity of their games, but the rapid increase in demand for their services has made supporting the current setup problematic. To facilitate online gameplay, they host gaming services on-premises using rented hardware. For each game, their gaming services setup consists of three virtual machines running the gaming software and five game databases hosted on a single SQL Server 2008 R2 instance. In addition to the dedicated gaming VMs and databases, they also host shared authentication and gateway VMs and databases. At its foundation, Tailspin Toys is a game development company, made up primarily of software developers. The few dedicated database and infrastructure resources they do have are struggling to keep up with their ever-increasing workload.

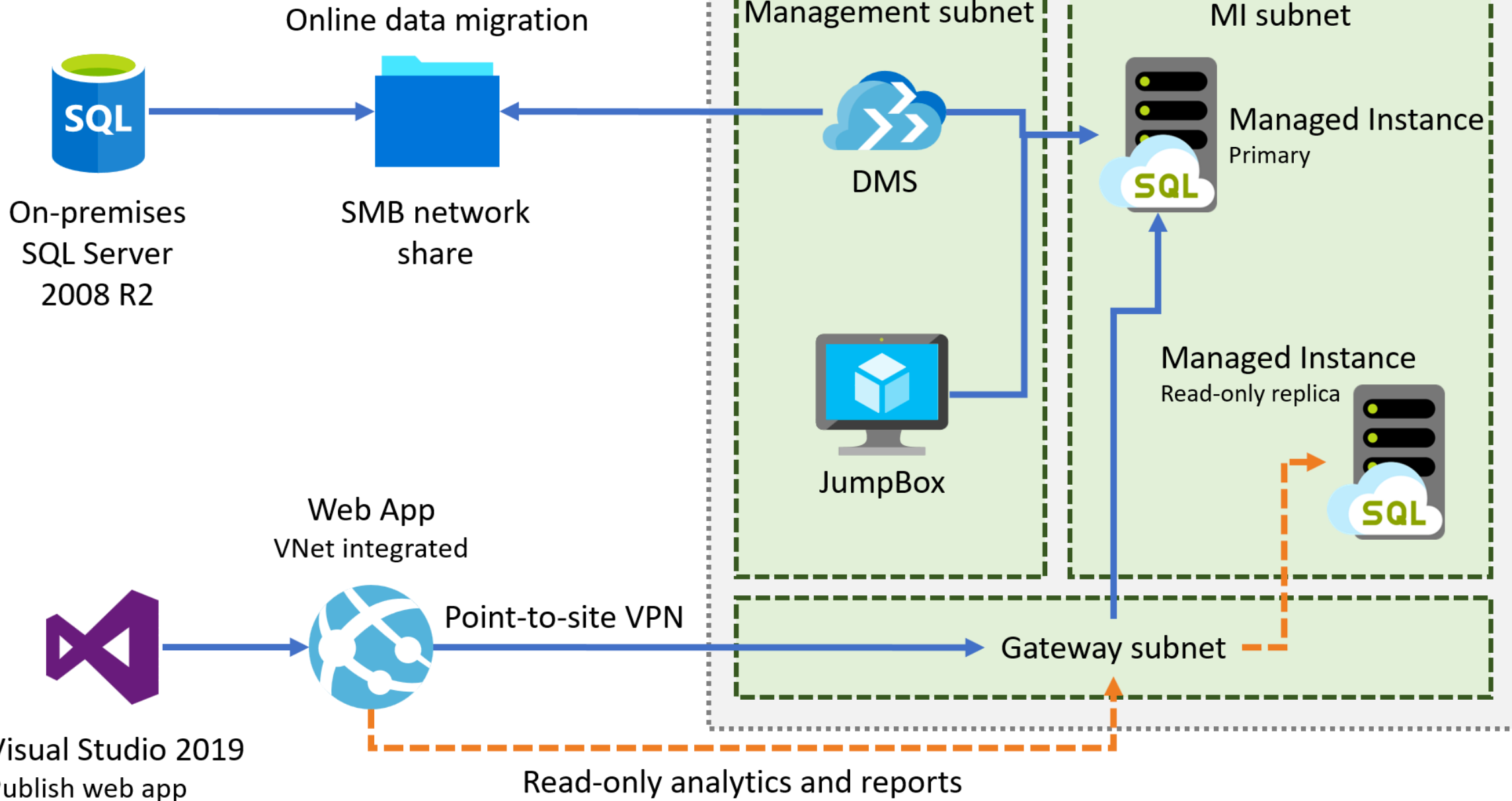


# Overview

## Setting the stage

WWI is hoping that migrating their services from on-premises to the cloud can help to alleviate some of their infrastructure management issues, while simultaneously helping them to refocus their efforts on delivering business value by releasing new and improved games. They are looking for a proof-of-concept (PoC) for migrating their gamer information web application and database into the cloud. They maintain their gamer information database, TailspinToys, on an on-premises SQL Server 2008 R2 database. This system is used by gamers to update their profiles, view leader boards, purchase game add-ons, and more. Since this system helps to drive revenue, it is considered a business-critical application and needs to be highly-available. They are aware that SQL Server 2008 R2 is approaching the end of support, and are looking at options for migrating this database into Azure. They have read about some of the advanced security and performance tuning options that are available only in Azure and would prefer to migrate the database into a platform-as-a-service (PaaS) offering, if possible. WWI is using the Service Broker feature of SQL Server for messaging within the WWI TailspinToys database. This functionality enables several critical processes, and they cannot afford to lose these capabilities when migrating their operations database to the cloud. They have also stated that, at this time, they do not have the resources to rearchitect the solution to use an alternative message broker.





Visual Studio 2019  
Publish web app

Read-only analytics and reports



# Step – by – Step

## Outline

- Perform database assessments
  - Azure SQL Database
  - Azure SQL Managed Instance
- Migrate the Database to SQL MI
- Update the Web Application to use the New SQL MI



DEMO



Thank You

